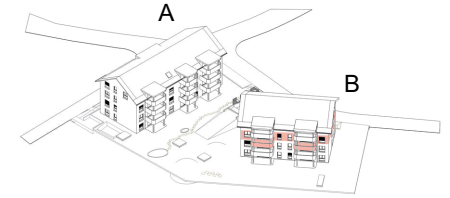


haus B  
1.obergeschoss



**B04** 4.5 zi. wohnung  
BF= 117.79m<sup>2</sup>

**B03** 4.5 zi. wohnung  
BF= 117.79m<sup>2</sup>

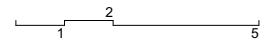


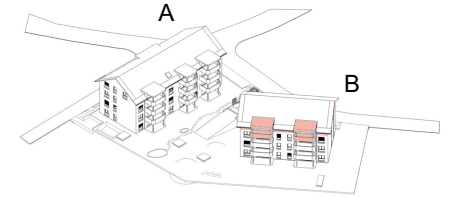
haus B  
2.obergeschoss



**B06** 4.5 zi. wohnung  
BF= 117.79m<sup>2</sup>

**B05** 4.5 zi. wohnung  
BF= 117.79m<sup>2</sup>



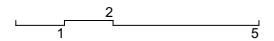


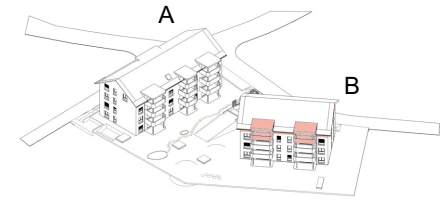
haus B  
dachgeschoss



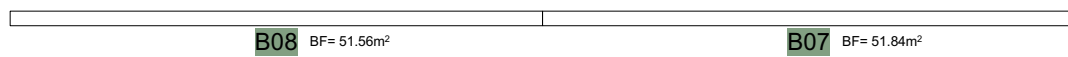
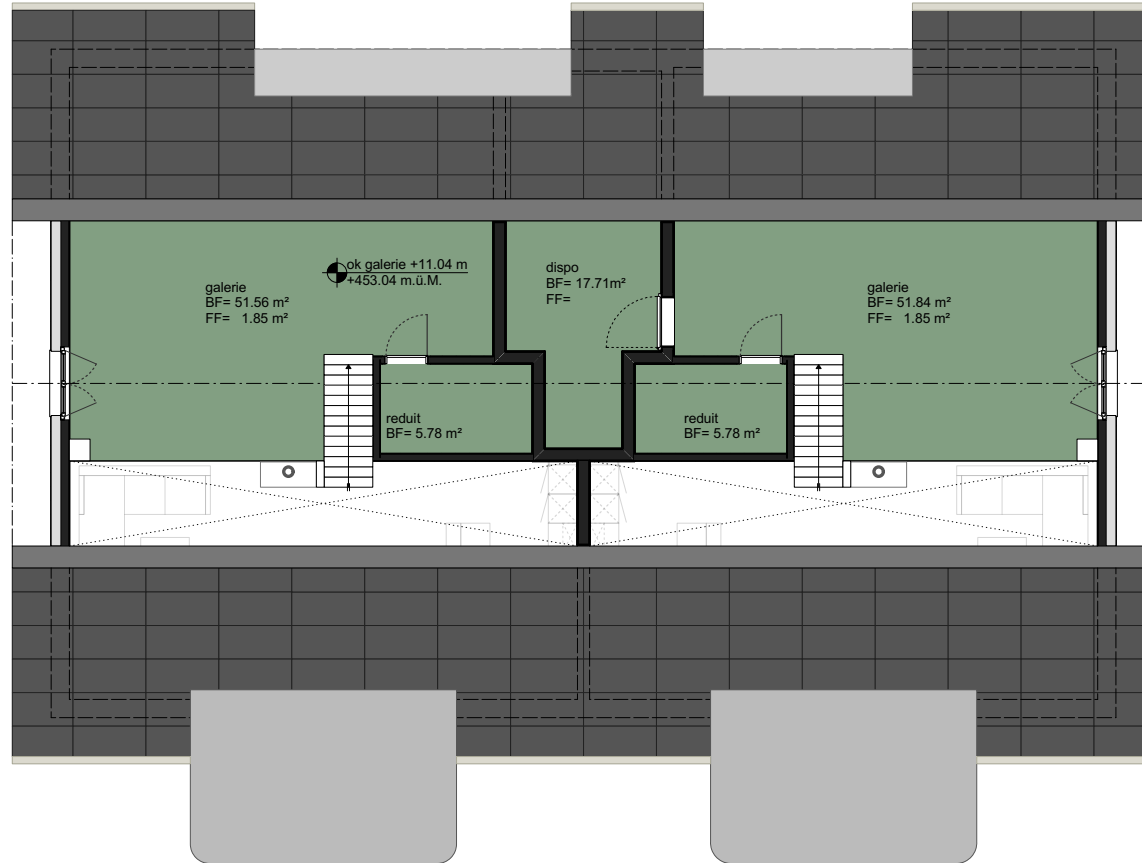
**B08** 4.5 zi. wohnung  
BF= 117.79m<sup>2</sup>

**B07** 4.5 zi. wohnung  
BF= 117.79m<sup>2</sup>



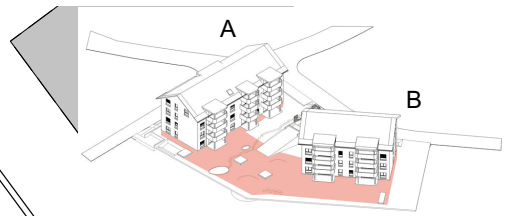
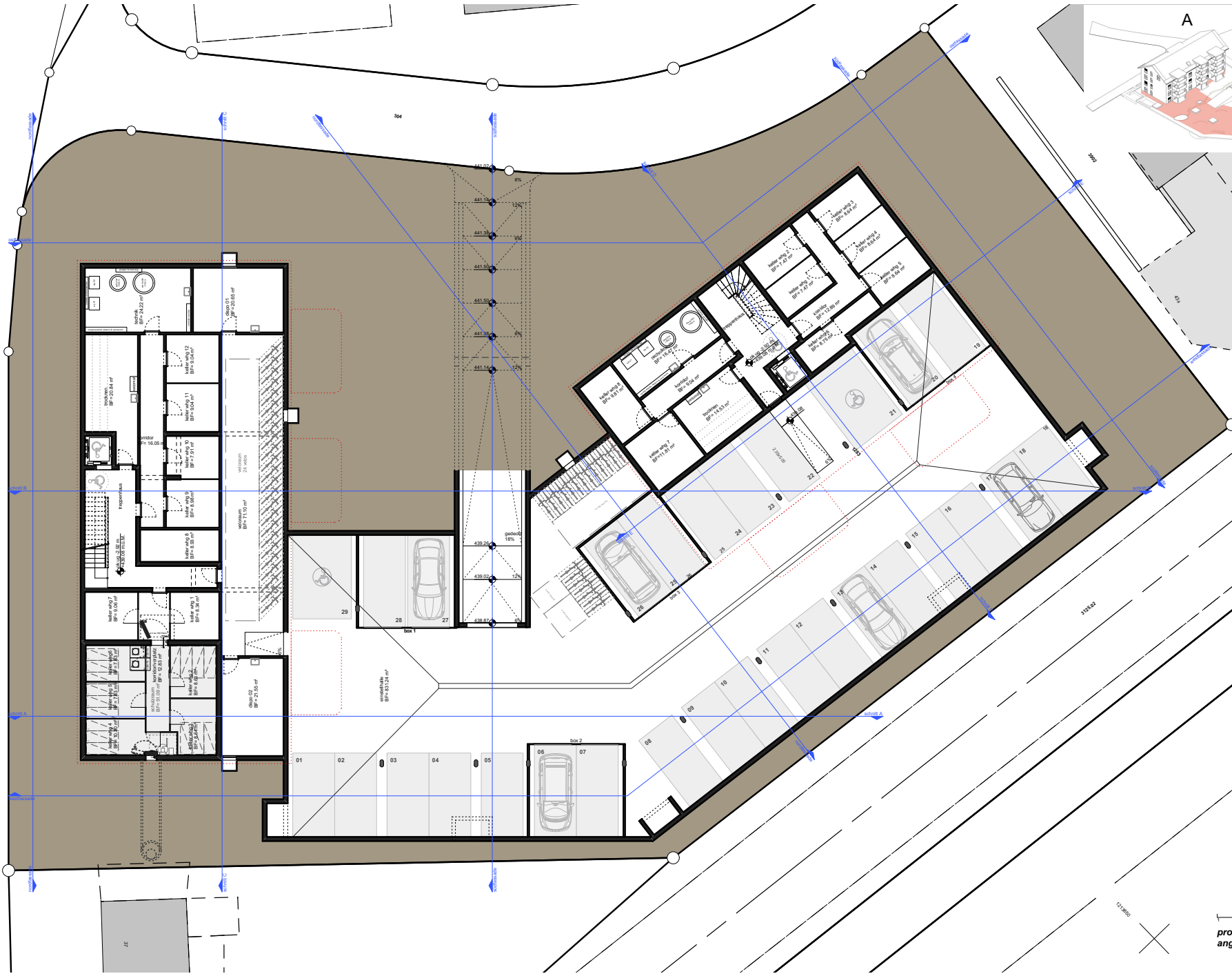


haus B  
dg galerie



b. müller Sarchitekten ag Kleinfluhstr. 6 | 2563 Ipsach | Tel +41 32 331 31 41 | Fax +41 32 331 31 64 | info@bmuelers.ch | www.bmuelers.ch

1 2 5  
 provisorische projektpläne  
 angaben ohne gewähr



untergeschoss



provisorische projektpläne  
angaben ohne gewähr

b. müller architekten ag | kienlestr. 6 | 2563 ipach | tel +41 32 331 31 41 | fax +41 32 331 31 64 | info@bmuellers.ch | www.bmuellers.ch